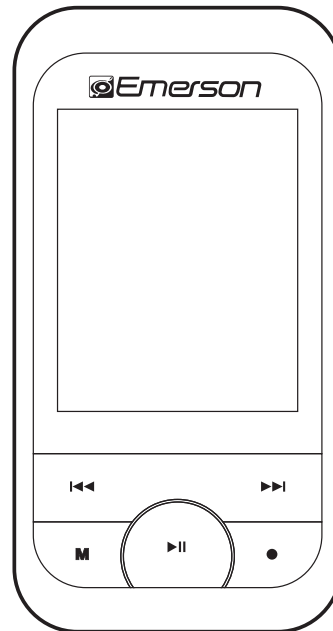




MP3 Music & Video Player

User Guide

4 GB



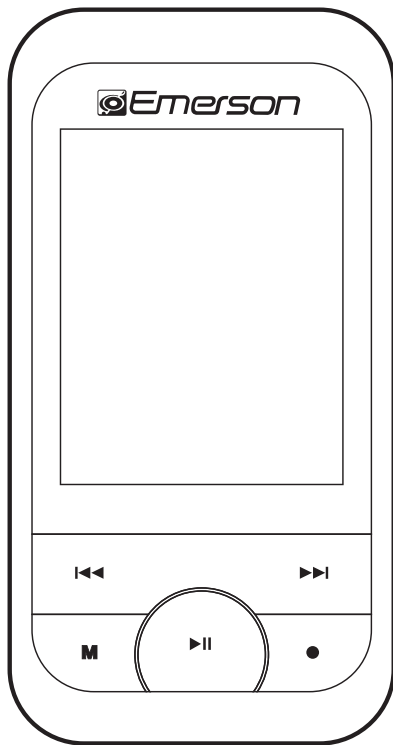
EMP414-4

 **TABLE OF CONTENTS**

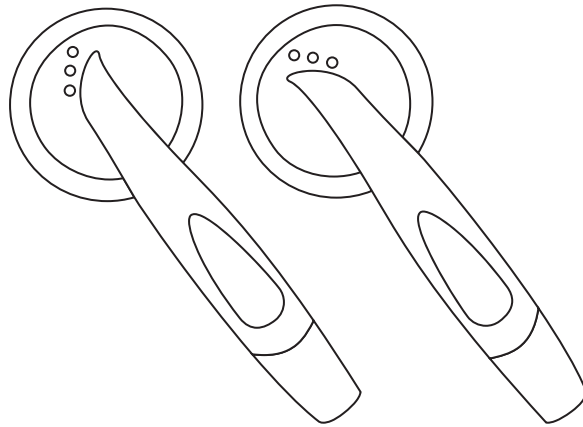
IN THE BOX	1
FCC INFORMATION	2
FCC Part 15	2
INTRODUCTION	3
IMPORTANT SAFETY PRECAUTIONS	4
FEATURES	5
LOCATION OF CONTROLS	6
CONNECTING TO A COMPUTER	7
System requirements	7
PC connection	7
Connecting the player to a computer	8
Downloading files to the player.....	8
Disconnecting the USB cable	9
CHARGING THE BATTERY	10
BASIC OPERATION	11
Turning on/off	11
Adjusting the volume	11
Selecting main menu or mode	11
Reset	11
MUSIC	12
Using the music player.....	12
Listening to music	13
Adjusting the volume	13
Skipping tracks	13
Searching backward or forward within a track	13

Music player interface	13
A-B repeat function	13
Music player settings	14
VIDEO	15
Playing videos	15
Searching backward or forward	15
CREATING AVI VIDEOS	16
PHOTO	19
Downloading pictures to the player	19
Viewing pictures	19
E-BOOK	20
Viewing TXT files	20
RECORD	21
Recording	21
Playing back recorded files	21
BROWSER	22
Deleting files	22
SETTINGS	23
Navigating the settings menu	23
FIRMWARE RE-INSTALLATION	24
TROUBLESHOOTING	26
SPECIFICATIONS	27
LIMITED WARRANTY	28

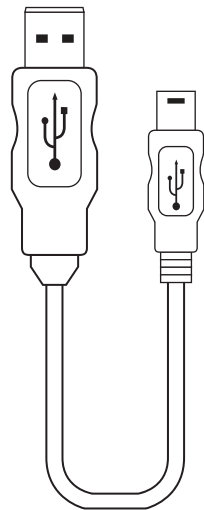
IN THE BOX



Emerson MP3 Video Player



Stereo Headphones



USB 2.0 Cable
(for battery charging
and high speed data transfer)



Installation CD



Quick Start Guide

 **FCC INFORMATION**

FCC Part 15

This equipment has been tested and found to comply with the requirements for a Class B digital device under Part 15 of the Federal Communications Commission (FCC) rules. These requirements are intended to provide reasonable protection against harmful interference in a residential installation. This equipment generates, uses and can radiate radio frequency energy and, if not installed and used in accordance with the instructions, may cause harmful interference to radio communications. However, there is no guarantee that interference will not occur in a particular installation. If this equipment does cause harmful interference to radio or television reception, which can be determined by turning the equipment off and on, the user is encouraged to try to correct the interference by one or more of the following measures:

- Re-orient or relocate the receiving antenna.
- Increase the separation between the equipment and receiver.
- Connect the equipment into an outlet on a circuit different from that to which the receiver is connected.
- Consult the dealer or an experienced radio/TV technician for help.

Changes or modifications to this equipment not expressly approved by the party responsible for compliance could void the user's authority to operate the equipment.

INTRODUCTION

Congratulations on purchasing the Emerson MP3 Music & Video Player.

Before using the player, read this manual thoroughly and keep it for future reference.

This manual contains important safety information and correct operation instructions. Read the manual carefully before you use the player in order to avoid any confusion.

Copyright Information

Trademarks and trade names used in this instruction manual are owned by their respective companies or organizations.

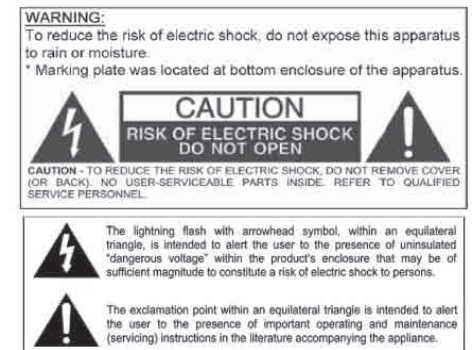
Unauthorized duplication of any recordings whether downloaded from the internet or made from audio CDs is a violation of copyright laws and international treaties.

The making of unauthorized copies of copy-protected material, may be an infringement of copyrights and constitute a criminal offence. This equipment should not be used for such purposes.

IMPORTANT SAFETY PRECAUTIONS

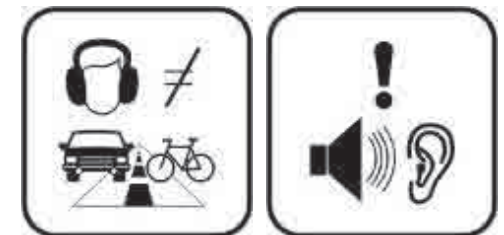
Always follow these basic safety precautions when using your player. This will reduce the risk of product damage and personal injury.

- Do not disassemble, repair or modify the player by yourself. Refer servicing to qualified personnel.
- This device contains a built-in battery, do not dispose of in fire.
- In the event that the battery is leaking, do not handle the device with your bare hands. Contact the service center for help since the liquid may remain in the player. If your body or clothes had contact with the battery liquid, wash it off thoroughly with water. Also, if some liquid gets into your eyes, do not rub your eyes but immediately wash them with clean water, and consult a doctor.
- Keep the player away from direct sunlight and any direct heat source.
- Do not expose the unit to rain or moisture.
- Do not use the player in dry environments to avoid static.
- Never apply heavy impact on the player, or place it on a magnet.
- Route the USB cable so that people and pets are not likely to trip over it.
- Disconnect the USB cable from the computer when you do not use the player for a long time.
- Clean only with a dry cloth. Make sure the player is turned off before cleaning. Do not use a liquid cleanser.
- Be sure to back up your files. We will not be liable for the loss of data due to improper operation, repair or other causes.



Precautions in using the earphones

- Do not use the earphones while driving an automobile or riding a bicycle. It is dangerous, and against the law. To avoid an accident, do not turn up the volume of the earphones too high while walking.
- It is not recommended that you use the headphones at a high volume for an extended time, as this may cause hearing damage.

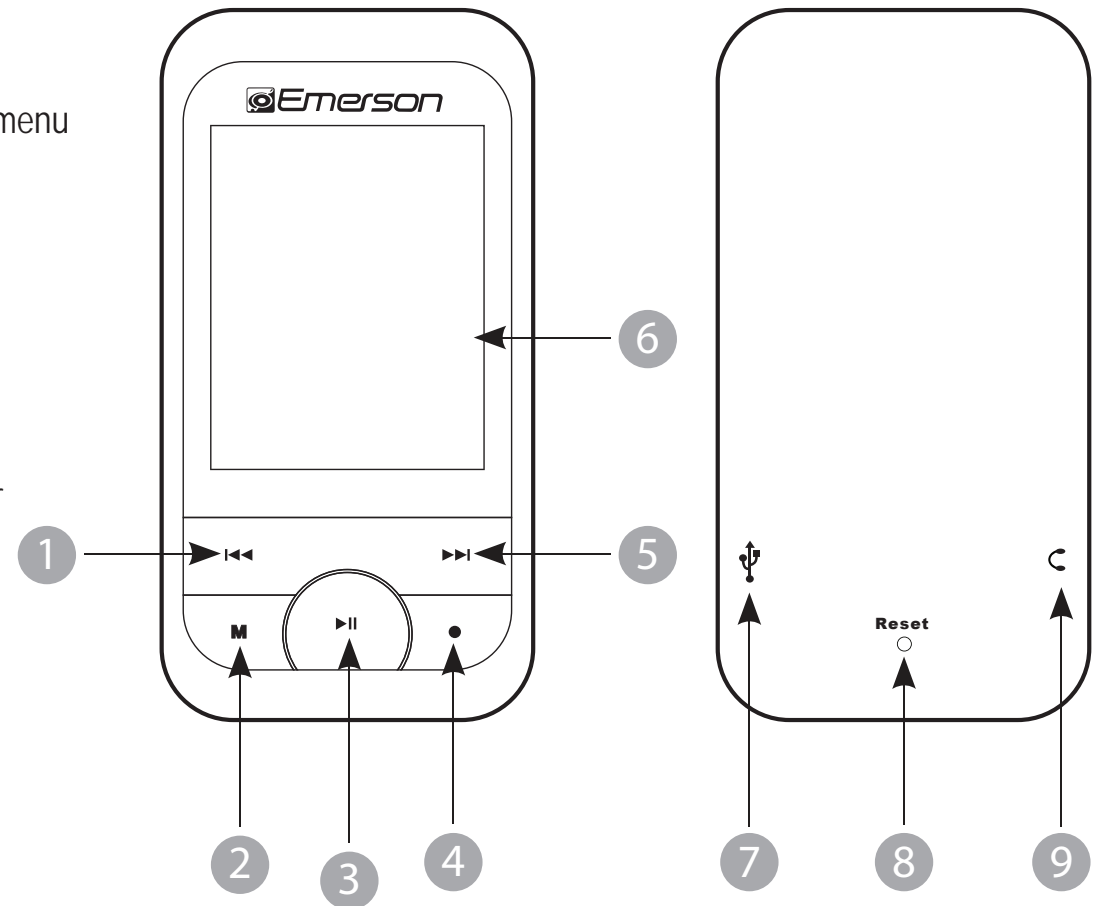


 **FEATURES**

- 4 GB Memory
- USB 2.0
- 1.8 inch LCD display
- Plays MP3 / WMA / WAV files
- MPEG - 4 (AVI) movie function
- Supports JPEG format picture browsing
- High quality voice recording; A -B repeat function
- No drivers needed (except for Windows 98)
- Mobile storage function
- Supports 3D sound
- 7 equalization modes
- ID3 TAG support (title, artist, and lyrics - edited in advance)
- Upgradeable firmware
- Li-ion rechargeable battery

LOCATIONS OF CONTROLS

1. [⏮] - **Previous button**: Fast backwards / Volume down
2. [M] - **Menu button**: Main menu / Select an option / Back to main menu
3. [▶||] - **Play button**: Power On-Off button / Pause
4. [●] - **Record button**: Start voice recording / Delete / A-B loop / Deactivate LCR / Back to previous directory
5. [▶▶] - **Next button**: Fast forward / Volume up
6. Display
7. USB 2.0 Hi-Speed connector for battery charging and data transfer
8. [**Reset**] - Reset hole
9. Headphone jack



CONNECTING TO A COMPUTER

System requirements

Your computer system must meet the following specifications:

- Pentium 200MHz or above
- Microsoft Windows 98SE/2000/ME/XP/Vista
- 120MB of available hard disk space
- USB port supported
- CD-ROM drive

PC connection

In order to enjoy the multimedia capabilities of your MP3 Video Player, you have to first copy your favorite files from your PC to its internal memory.

Connect your **MP3 Video Player** to the computer using the included USB 2.0 cable. The device will be detected automatically without installing any driver (except for computers running Windows 98, in which case you have to install the W98 driver from the bundled CD). Once detected, you can read/write to the device's memory just as if you were using a regular disk drive.

Important: *To avoid any data loss, always perform a safe USB device extraction before disconnecting the USB cable from the PC. In Windows XP, for example, you can find the safe extraction icon in the task bar, next to the system clock.*

Connecting the player to a computer

Files can be transferred directly into the player using the USB data cable. Make sure your computer is powered on. Below is the procedure of connecting the player to a computer:

1. Plug the larger USB connector of the USB cable into the USB port on the computer.
2. Plug the other end (small) of the USB cable to the player.
3. The computer system detects "New hardware" and starts to install the driver automatically. Wait for the system to finish the installation.
When it has finished, "Emerson MP3" will be created in "My Computer".

Downloading files to the player

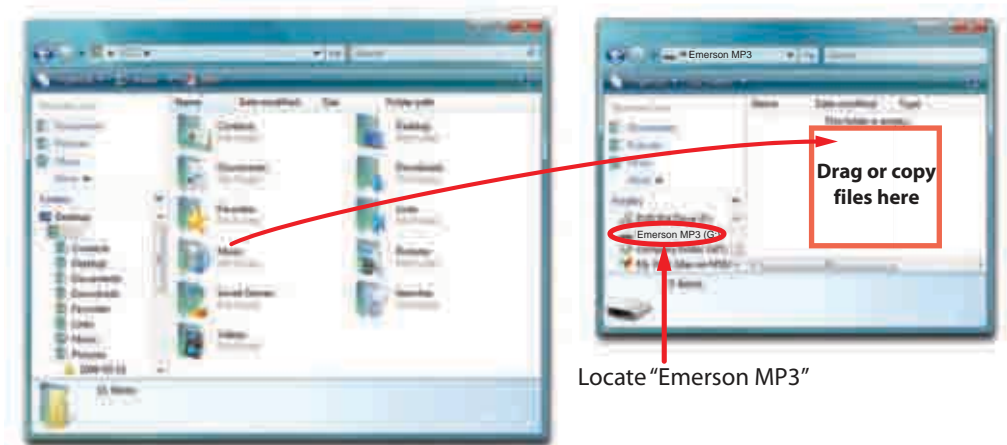
To download files such as music, pictures, videos, or text from your computer, perform the following steps:

1. Connect the MP3 player to the USB port of your computer.
2. Open "Windows Explorer" or "My Computer", and locate "Emerson MP3".
3. Select the files on your computer, and simply move it into "Emerson MP3" in the usual way (drag-and-drop, copy-and-paste).
After copying is completed, the data will be available on the MP3 player.

OR

*We recommend using **Windows Media Player** to organize and transfer music and pictures to your player. For more information regarding **Windows Media Player**, please refer to the **Quick Start Guide**.*

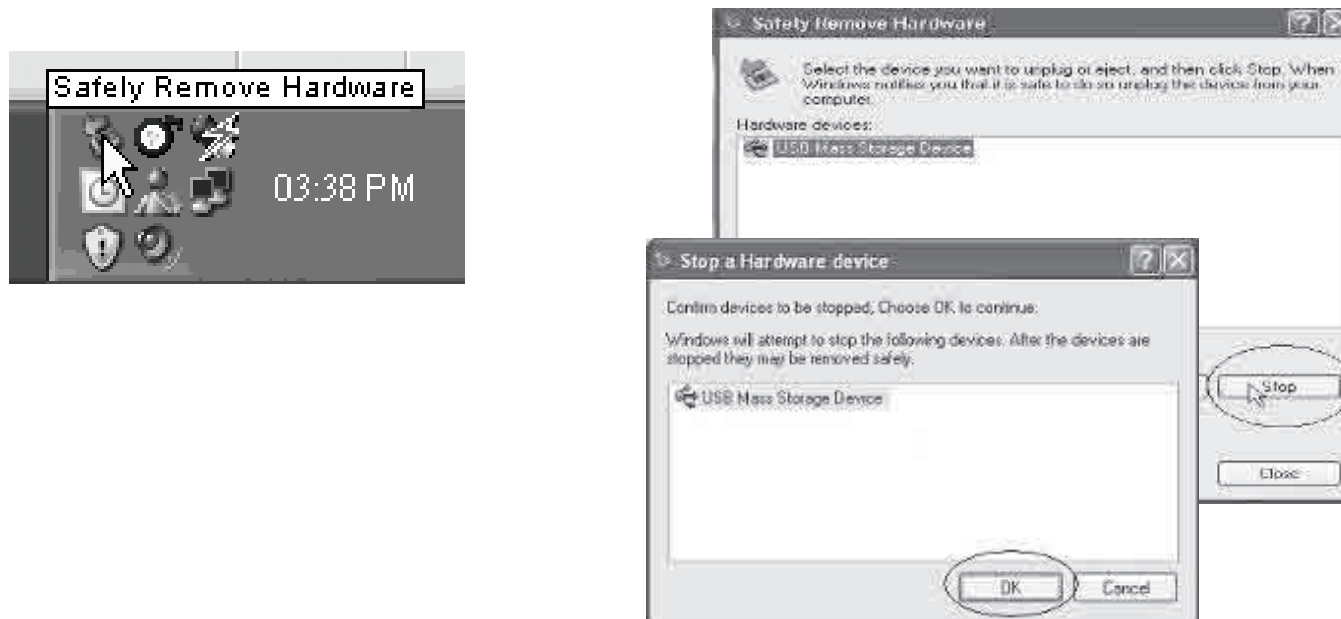
Note: Please do not disconnect the USB cable during loading, it may cause malfunction of the player and the files.



Disconnecting the USB cable

After completing the file transfer, please disconnect the USB cable the following way:

1. Double click the green arrow "Safely Remove Hardware" in the task bar on the bottom right of the window.
2. Select "USB Device" and click "Stop".
3. When the "Stop a Hardware device" appears, click "OK" to disconnect the USB mass storage device, and unplug the player safely.



CHARGING THE BATTERY

Your **MP3 Video Player** has an integrated rechargeable Li-Ion battery. It comes fully charged from the factory, but it is recommended to perform a full recharge before the first use.

Recharge the battery by connecting the player to a computer using the included USB 2.0 cable (using any USB type mini B with 5-pins will also work).

Charging time is between 3-5 hours, depending if the player is powered off or working. To keep the battery in good condition, we recommend not using the player while charging, with the power switch in the "OFF" position, and not leaving it charging for more than 8 hours.

For battery saving, your **MP3 Video Player** has two systems:

It will power off the LCD display after 30 seconds of inactivity, and it will power off completely after another 10 minutes of inactivity. Both systems are configurable, respectively, browsing the menus "**SETTINGS**" → "**Display**", or "**SETTINGS**" → "**Power off**". In order to maximize the battery's lifespan, it is recommended to not completely disable this power saving feature.

Important:

- Fully charge the player before using it for the first time.
- Charge the player right away when the "Low battery" message is displayed.
- Do not over charge or discharge the player. Over charging or discharging will shorten the battery life.
- The battery could be over discharged if the player is not used for a long time (over three months). To avoid over discharge, fully charge the player every two or three months and always keep the voltage of the battery above 50%.

BASIC OPERATION

Turning on/off

- To turn on the player press and HOLD the [▶||] button for 3 seconds until the LCD screen lights up.
- To turn the player off, press and HOLD the [▶||] button until the LCD screen shuts off.

Adjusting the volume

Press and HOLD the [▶▶] button to increase the volume, or [◀◀] button to decrease the volume.

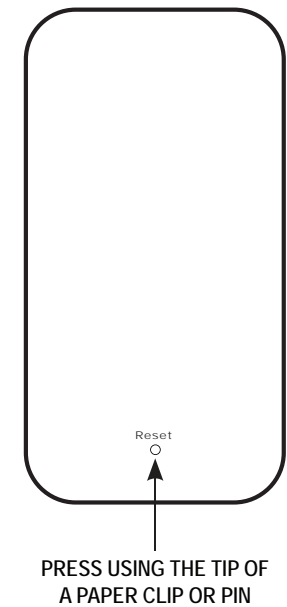
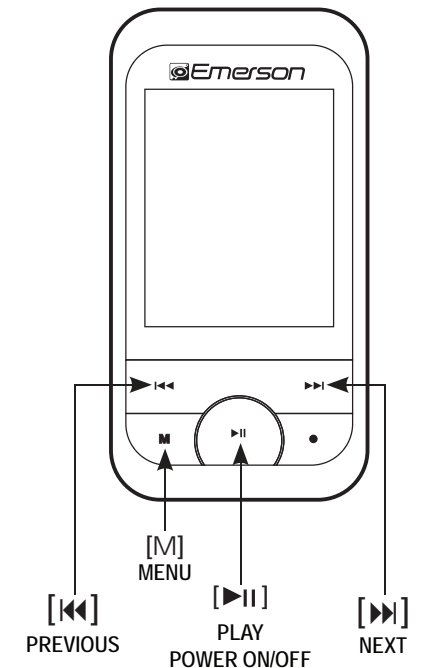
Selecting main menu or mode

- Use the [◀◀] or [▶▶] buttons to select an option from the main menu, and press the [M] button to confirm your selection.
- To return to the main menu, press and HOLD the [M] button.

Reset

- In the event your MP3 Video Player freezes or is not functioning properly, press the [Reset] button as shown in the diagram at the right.

NOTE: Pressing the [Reset] button will not affect the files stored on the player.



MUSIC

Using the music player

1. Select “MUSIC” from the main menu using the [◀◀] or [▶▶] buttons, and press the [M] button to enter.
2. Choose from the submenu options below:
 - **“Music Play”**: Displays the music player screen.
 - **“All Music”**: With this option you will see, sorted alphabetically by file name, all the songs you have stored in your **MP3 Video Player**.
 - **“Artist”, “Album”, and “Title”**: See listings of your favorite music sorted by artist, album or title respectively.

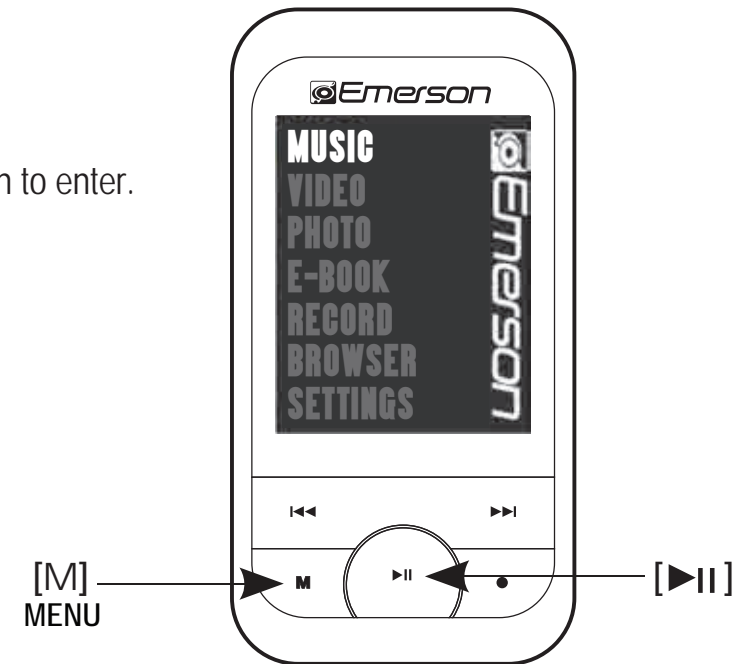
Note: In order for the music files to be displayed in these listings, their artist, album and title information must be stored into the file (information known as ID3-Tag). You can find freeware utilities to create or modify ID3-Tags like MP3Tag or ID3 Renamer.

- **“Favorite”**: With this option you can listen to your favorite music that you already marked as favorite. To add a song to your **“Favorite”** list, simply press the [▶||] button while on top of a file. Make a selection using the [M] button. Inside the **“Favorite”** folder if you press the [▶||] button a new menu will pop up allowing you to erase one or all the favorite marked songs. Make a selection using the [M] button.

Note: When erasing an element from Favorites, you only eliminate what marks it as favorite, the file will stay in memory.

- **“Record”**: Listen to the clips you have recorded using the microphone with this option. Choose the clip you want to listen to and press the [M] button.
- **“Dir List”**: With this option you can explore the file tree in the memory of the **MP3 Video Player** just as it would be displayed in your computer.
- **“Update”**: Use this option whenever you store or delete songs so the artist, album and title listings are recreated accurately.

Note: When the player is unplugged from the PC via the safe USB device removal, the MP3 Video Player will run an update automatically.



Listening to music

1. Select "MUSIC" from the main menu, and press the [M] button to enter.
2. Use the [◀◀] or [▶▶] buttons to select "Music Play", and press the [M] button to enter the music play mode.
3. Press the [M] button to view the music file list.
4. Use the [◀◀] or [▶▶] buttons to select the music file you wish to listen to and press the [M] button.
5. Press the [▶||] button to begin playback.
6. While a song is playing, press the [▶||] button to pause the playback. To resume playback, press the [▶||] button once again.
7. To return to the main menu, press and HOLD the [M] button.

Adjusting the volume

- Press and HOLD the [▶▶] button to increase the volume, or [◀◀] button to decrease the volume.

Skipping tracks

- Briefly press the [◀◀] button to go to the previous track.
- Briefly press the [▶▶] button to skip to the next track.

Searching backward or forward within a track

- Pause the song (press the [▶||] button), and then press and HOLD the [◀◀] button to search backward within a track.
- Pause the song (press the [▶||] button), and then press and HOLD the [▶▶] button to search forward within a track.

Music player interface

If the song has lyrics (LRC file), they will be shown on screen, otherwise the display will show the equalizer.

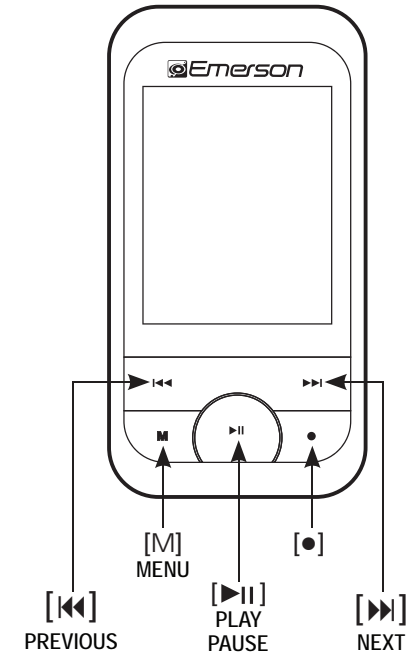
Note: The song lyrics is a text file named exactly after the music file with the .LRC extension. If some of your music files do not have the LRC file, the lyrics will not be shown, but you can listen to them without problem.

- Press and HOLD the [●] button during playback to activate/deactivate the ID3-Tag and LRC function.

A-B repeat function

You can loop play a segment of a song with this function.

1. Press the [●] button during playback to set the A point and press the [●] button again to set the B point.
2. To cancel this function, press the [●] button again.
3. To exit the current playback and return to the file list press the [M] button.
4. To return to the main menu, press and HOLD the [M] button.



Music player settings

You can choose the equalization mode that fits your preferences. To do so, browse to **“SETTINGS”** → **“MUSIC”** → **“EQ select”** and choose one of the 7 available modes: **“Normal”**, **“3D”**, **“Rock”**, **“Pop”**, **“Classic”**, **“Bass”**, and **“Jazz”**.

The playing order of the tracks depends on the selected mode. By default, the mode is set to **“Normal”**. You can change to a different mode browsing to **“SETTINGS”** → **“MUSIC”** → **“ Play Mode”**, and choosing **“Normal”** (sequential order) or **“Shuffle”** (random).

You can also set the repeat mode by browsing to **“SETTINGS”** → **“MUSIC”** → **“Repeat Mode”** and selecting your preferred mode:

“Once” - Plays the current file and stops.

“Repeat 1” - Repeat current track.

“Folder Once” - Plays files inside the current folder and stops.

“Folder Repeat” - Repeats the files inside the current folder.

“All Once” - Plays all the files once.

“All Repeat” - Plays all the files continuously.

“Intro” - Plays the first 10 seconds and skips to the next file.

To know the amount of free memory, browse to **“SETTINGS”** → **“SYSTEM”** → **“About”**.

VIDEO

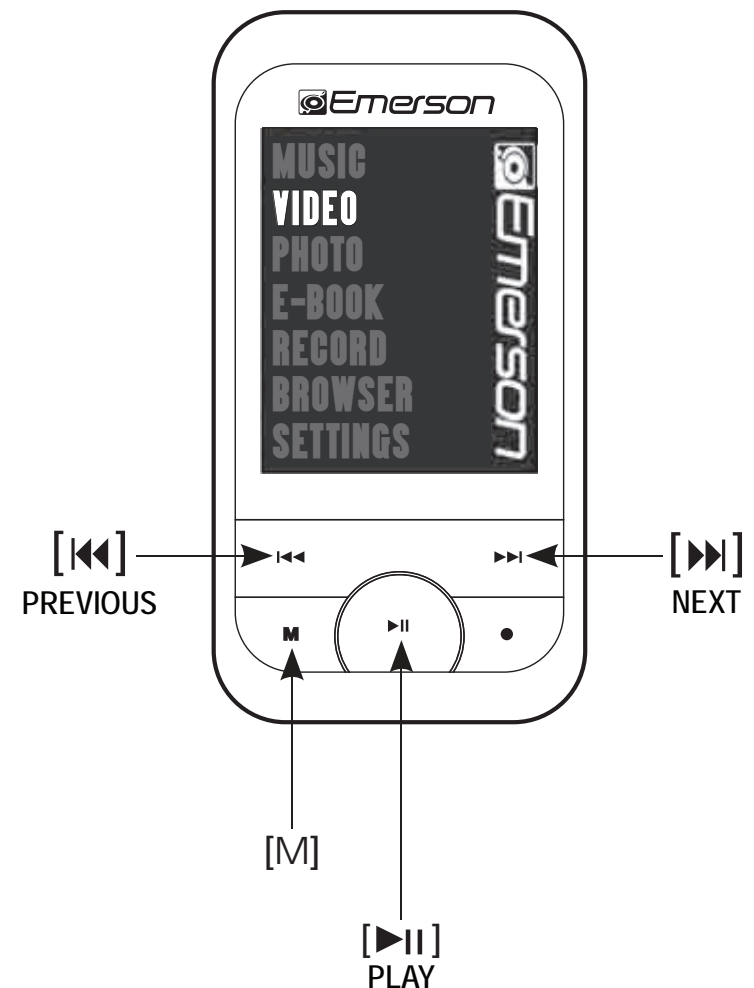
You can play AVI / WMV / MPG / VOB / ASF videos that you previously converted to the AVI format (XVID with MP2 audio and 160 x 128 resolution), using the easy software tool included inside the bundled CD.

Playing videos

1. Select "VIDEO" from the main menu using the [◀◀] or [▶▶] buttons, and press the [M] button to enter.
2. Use the [◀◀] or [▶▶] buttons to select the video file you would like to watch, and press the [M] button to begin playback.
3. Press the [▶||] button to pause playback, to resume playback press the [▶||] button once again.
4. To return to the main menu, press and **HOLD** the [M] button.

Searching backward or forward


1. Use the [◀◀] or [▶▶] buttons to skip to the previous/next video.
2. You can fast forward or rewind a video by pausing it (pressing the [▶||] button) and then holding the [◀◀] or [▶▶] buttons.
3. To return to the files explorer, press the [M] button.
4. To return to the main menu, press and **HOLD** the [M] button.



CREATING AVI VIDEOS

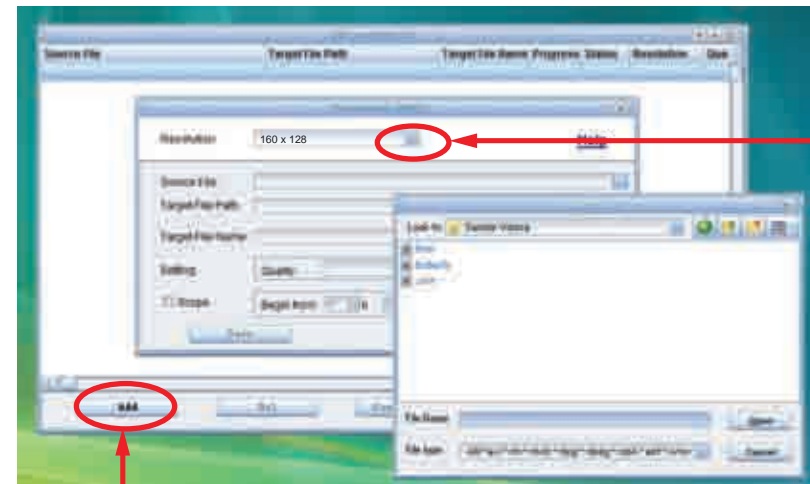
With the AVI Converter software tool you can easily convert your AVI / WMV / MPG / VOB / ASF videos to the AVI format (XVID with MP2 audio and 160 x 128 resolution) so you can enjoy them with your **MP3 Video Player**.

For installing the AVI converter follow these steps:

1. Insert the provided CD to the CD-ROM drive of your computer.
2. Click on **"Video Converter"** and follow the instructions to download the converter to your desktop.
3. Click on **"AVI Converter"** from the "Start " menu, or the  icon on your desktop.
4. Press the **"Add"** button and select 160 x 128 resolution.



Click on
"Video
Converter"

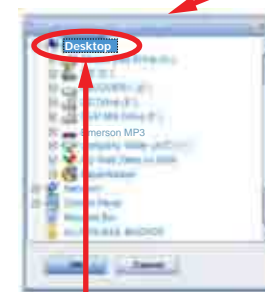
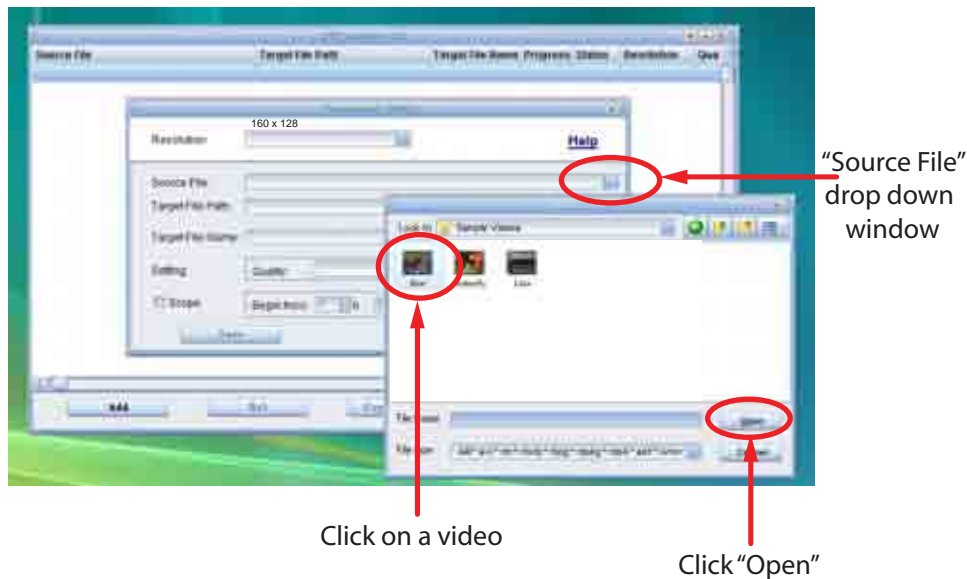


Click on the
"Resolution" drop
down window
and select
"160 x 128"

Click "Add"

5. Select the video file that you want to convert by clicking on the **"Source File"** drop down window.
6. Click on the **"Target File Path"** drop down window to select the destination for the converted video. You can send it directly to your video player by selecting **"Emerson MP3"**, and clicking **"OK"**, or if you would like to save the video to your computer, we recommend sending it to your **"Desktop"**, where you can easily find the video, and transfer it to your video player.

NOTE: To send a converted video directly to your video player, it must be connected to the computer's USB port at time of conversion.



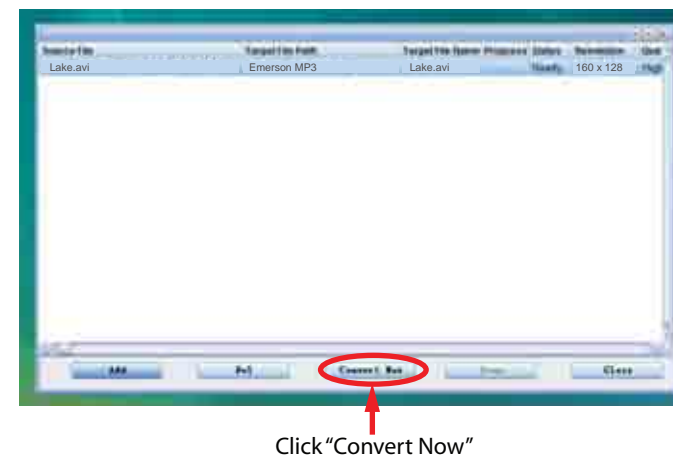
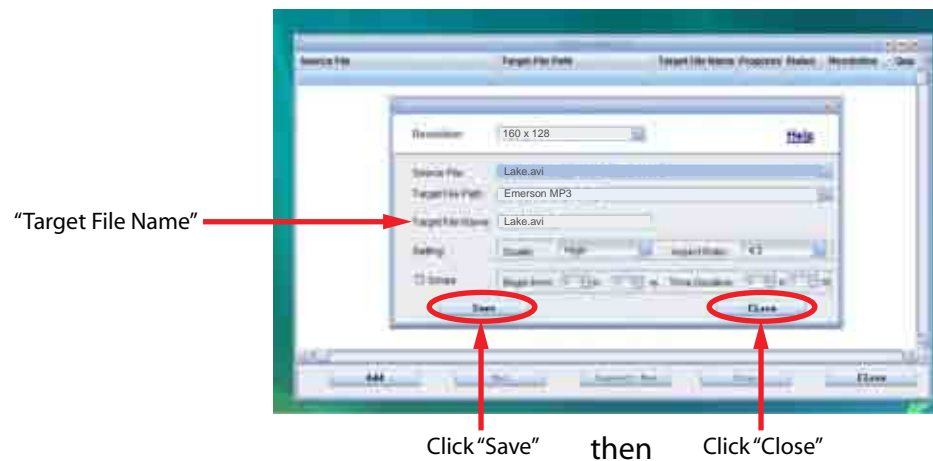
OR



Choose "Desktop" and save the converted video to the "Desktop" on your computer. After saving the converted video to your desktop, you can transfer it directly to your player.

Choose "Emerson MP3" and save the converted video directly to your MP3 video player
Note: Your MP3 video player must be connected to the USB port of your computer during the conversion for this option.

7. Write the name of the new AVI video file to be created ("**Target File Name**").
8. Choose the image quality of the new video. High quality will use more memory and the output file will be bigger.
9. Select the format of the output video ("**Aspect Ratio**"). Choose "Full" if you want the output video to include the whole original image. Black bands will be added if necessary. "**4:3**" will fill the whole screen, but some part of the image may be removed from the video. "**16:9**" for panoramic option.
10. The "**Scope**" section allows you to determine the start and end of the input video. By default, the input video will be converted from start to end.
11. Press "**Save**" to add the video recording to the list of pending jobs.
Note: You can add as many conversion jobs as you like, in order to convert several videos automatically. When you are done adding jobs, press the "Close" button.
12. Press "**Convert Now**" to start the job queue. If more than one job is present they will be performed sequentially.
13. Once finished, press "**Close**" to exit application.
14. Connect your **MP3 video player** to the computer and copy the new AVI file(s) inside your desired folder.



PHOTO

The **MP3 Video Player** is capable of storing and displaying your favorite pictures.

Downloading pictures to the player

To download pictures from your computer, perform the following steps:

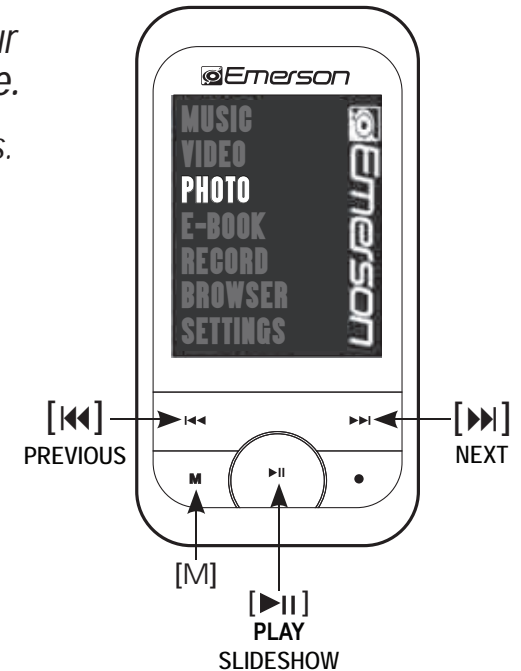
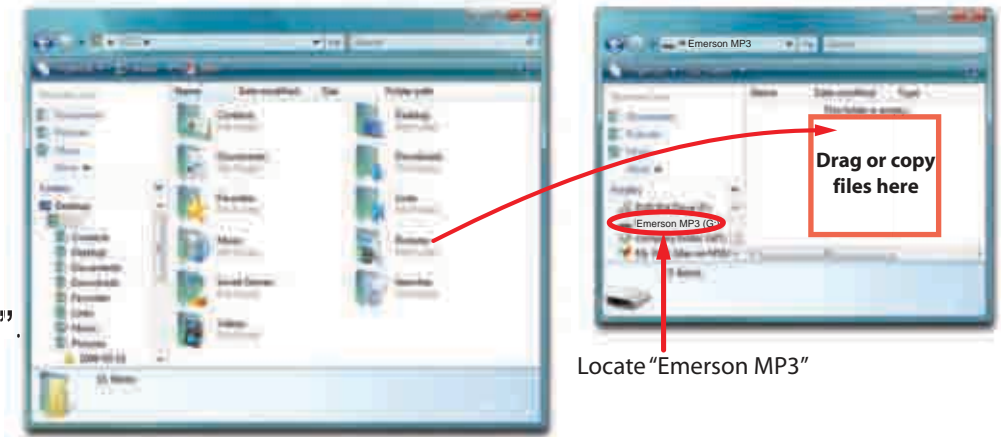
1. Connect the MP3 player to the USB port of your computer.
2. Open “**Windows Explorer**” or “**My Computer**”, and locate “**Emerson MP3**”.
3. Select the files on your computer, and simply move it into “**Emerson MP3**” in the usual way (drag-and-drop, copy-and-paste). After copying is completed, the data will be available on the MP3 player.

*We recommend using **Windows Media Player** to organize and transfer music and pictures to your player. For more information regarding **Windows Media Player**, please refer to the **Quick Start Guide**.*

***Note:** Please do not disconnect the USB cable during loading, it may cause malfunction of the player and the files.*

Viewing pictures

1. Select “**PHOTO**” from the main menu using the [◀◀] or [▶▶] buttons, and press the [M] button to enter.
2. Use the [◀◀] or [▶▶] buttons to select the picture you wish to view, and press the [M] button.
3. Use the [◀◀] or [▶▶] buttons to skip to the previous or next picture.
4. Press the [▶▶] button to enable/disable the slideshow (timing can be set from the “**SETTINGS**” → “**Auto Browse**” → “**Photo Browse**” menu).
5. To return to the main menu, press and **HOLD** the [M] button.



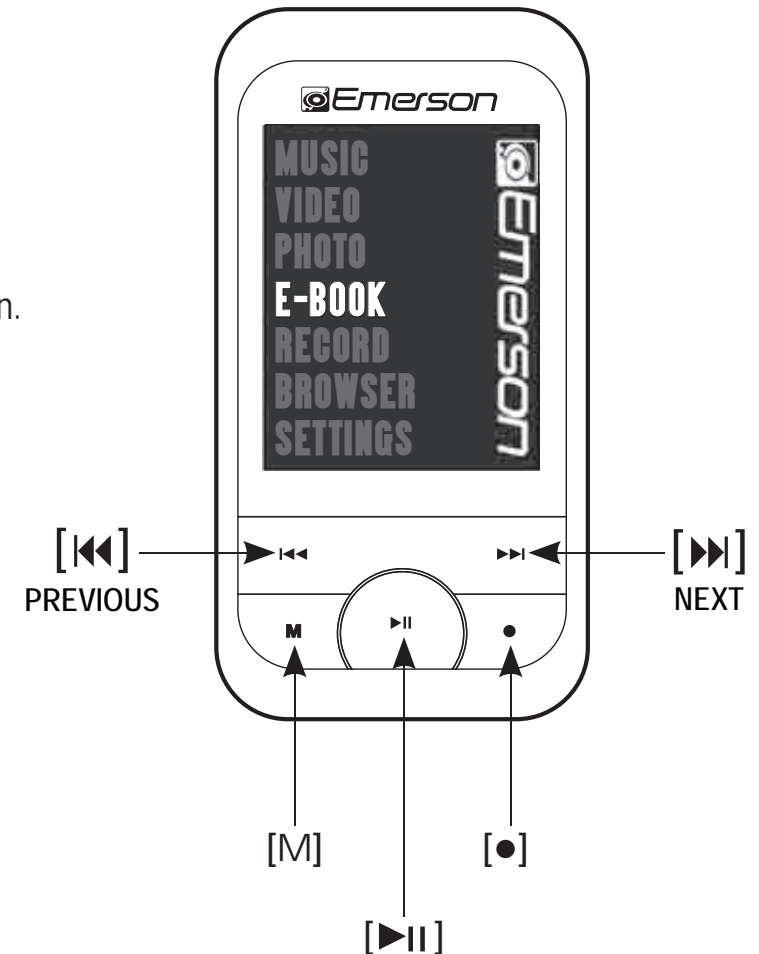
E-BOOK

View and enjoy your electronic books (e-book in TXT format) anywhere with the high resolution LCD screen of your **MP3 Video Player**.

Viewing TXT files

1. Select "E-BOOK" from the main menu using the [◀◀] or [▶▶] buttons, and press the [M] button to enter.
2. Use the [◀◀] or [▶▶] buttons to select the TXT file you wish to view, and press the [M] button.
3. Use the [◀◀] or [▶▶] buttons to skip to the next or previous line.
4. Press and **HOLD** the [●] button to display the "Save BookMark" list. Use the [▶▶] button to select the bookmark location, and press the [M] button to save it.
5. Press the [●] button to display the "Load BookMark" list. Use the [▶▶] button to select the bookmark, and press the [M] button to view it.
6. While reading the E-book, press the [M] button to return to the file list.
7. To return to the main menu, press and **HOLD** the [M] button.

***NOTE:** The bookmark is only available to the current file, and has to be reset while reading the other files.*



RECORD

Your **MP3 Video Player** is able to perform voice recording with its integrated microphone.

The sound files that you record are stored inside the **“Record”** folder. The files are in WAV format.

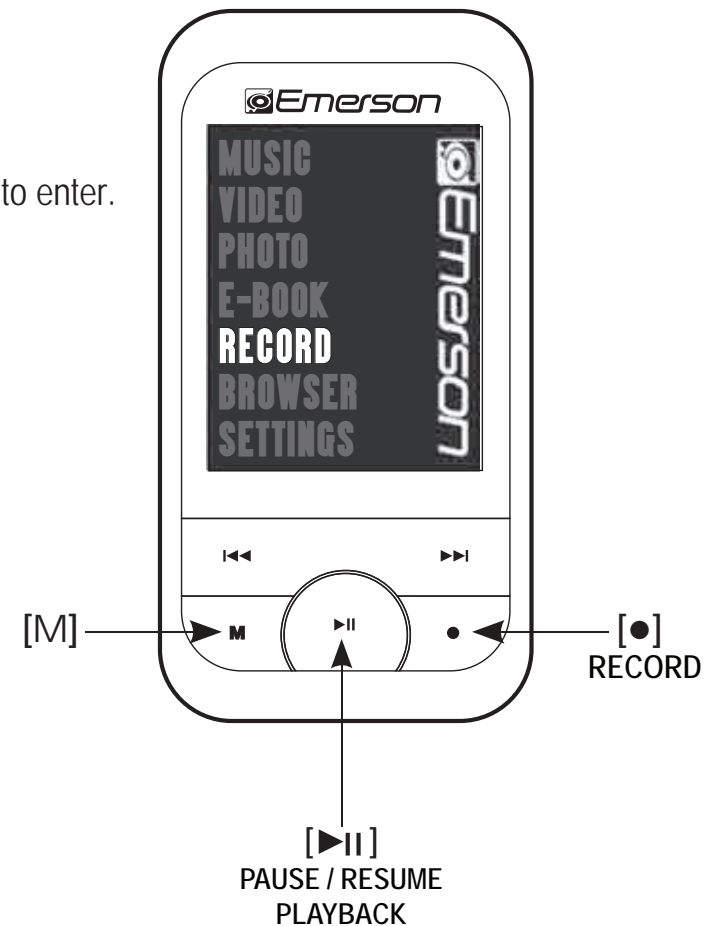
You can listen to these files while being at the **“MUSIC”** mode or **“BROWSER”** mode, and selecting the **“Record”** folder.

Recording

1. Select **“RECORD”** from the main menu using the [◀◀] or [▶▶] buttons, and press the [M] button to enter.
2. Press the [●] button to begin recording, and press the [●] button again to pause recording.
3. Press and **HOLD** the [●] button to stop recording, and save the recorded file.
4. To return to the main menu, press and **HOLD** the [M] button.

Playing back recorded files

1. Select **“MUSIC”** or **“BROWSER”** from the main menu using the [◀◀] or [▶▶] buttons, and press the [M] button to enter.
2. Use the [◀◀] or [▶▶] buttons and select the **“Record”** folder, and press the [M] button to enter.
3. Select the file you wish to play using the [◀◀] or [▶▶] buttons, and press the [M] button to begin playback.
4. Press the [▶||] button to pause or resume playback.
5. To return to the main menu, press and **HOLD** the [M] button.



BROWSER

This handy function allows you to directly choose the music / video / image / e-book folder or file you want to play or view. To browse through your folders while on "MUSIC" / "VIDEO" / "PHOTO" / "E-BOOK" mode, briefly press the [M] button. You can also access your files with the "BROWSER" option of the main menu.

1. Select "BROWSER" from the main menu using the [◀◀] or [▶▶] buttons, and press the [M] button to enter.
2. Use the [◀◀] or [▶▶] buttons to select the previous or next folder or file, and press the [M] button to enter the selected folder.
3. Select a file using the [◀◀] or [▶▶] buttons, and press the [M] button to start playback or open the file.

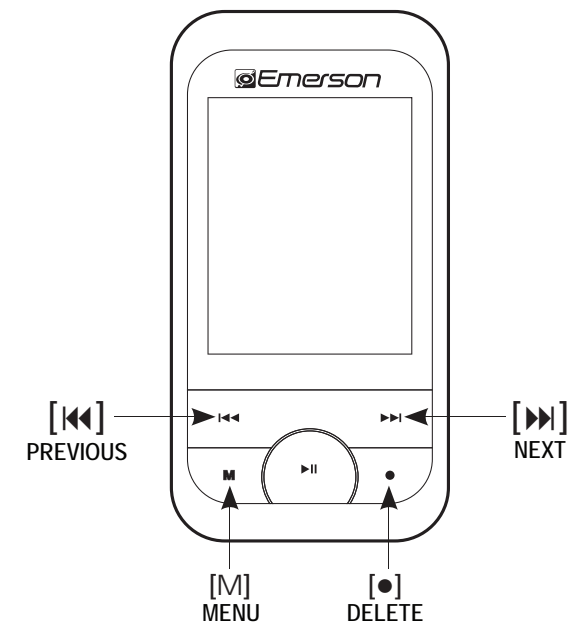
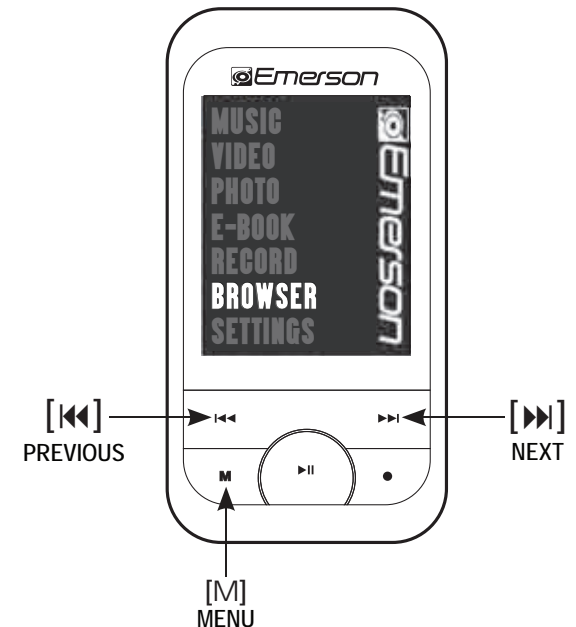
Deleting Files

1. Select "BROWSER" from the main menu using the [◀◀] or [▶▶] buttons, and press the [M] button to enter.
2. Use the [◀◀] or [▶▶] buttons to select the file you wish to delete.
3. Press the [●] button, and use the [◀◀] or [▶▶] buttons to select "Yes", and press the [M] button to confirm and delete the file.
4. To return to the main menu, press and **HOLD** the [M] button.

OR

• From your computer

You can easily delete music, picture or video files by connecting your video player to the computer and selecting "Emerson MP3" from Windows Explorer or "My Computer", or click on "Open Folder" to view files from the "Auto play" option window, simply select the file and delete it as you would delete any other file from your computer.

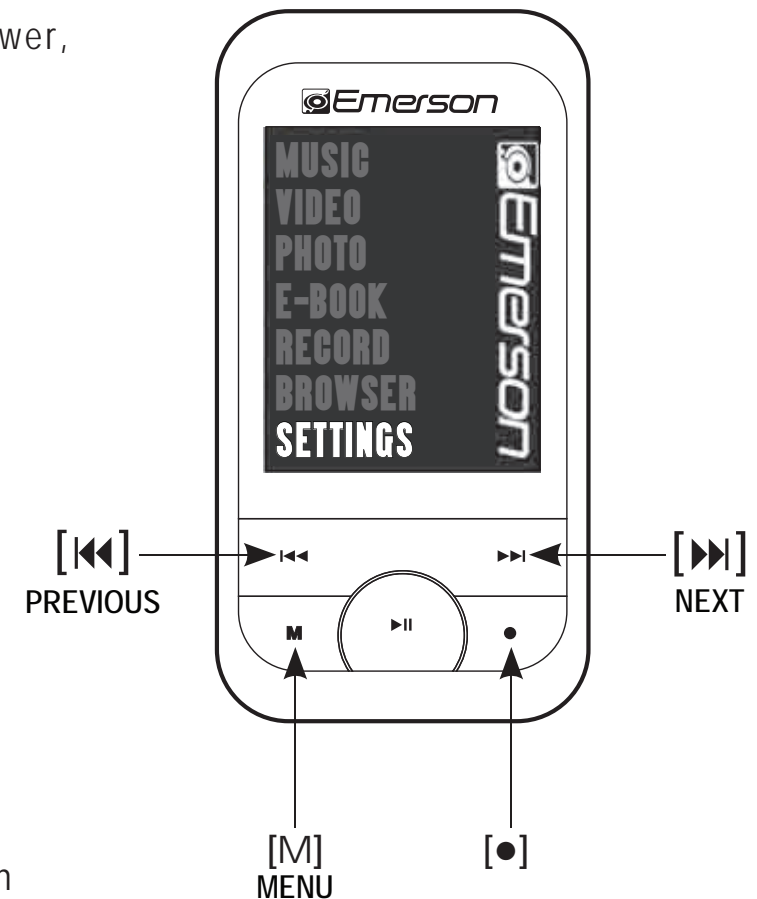


SETTINGS

The player's settings can be customized by accessing "SETTINGS" in the main menu. The settings menu consists of several items where various functions can be selected concerning music, power, language, display, recording, system, etc.

Navigating the settings menu

1. Select "SETTINGS" from the main menu using the [◀◀] or [▶▶] buttons, and press the [M] button to enter.
2. Use the [◀◀] or [▶▶] buttons to select from the following settings options:
 - Music
 - Record
 - AutoBrowse
 - Display
 - System
 - Power Off
 - Language
3. Press the [M] button to enter.
4. To save an option, use the [◀◀] or [▶▶] buttons to select the option, and press the [M] button to confirm.
5. To return to the previous directory, press the [●] button.
6. To return to the main menu, press and **HOLD** the [M] button.



FIRMWARE RE-INSTALLATION

Your MP3 Video Player has an installed operating system, usually called firmware, that sometimes needs to be re-installed.

The process is easy, but has to be performed carefully, and only when it is really necessary. If you see that the player halts, reboots randomly, or you have problems to access the memory content from your computer, those are signs that the firmware might be damaged, and you should reinstall the latest version available.

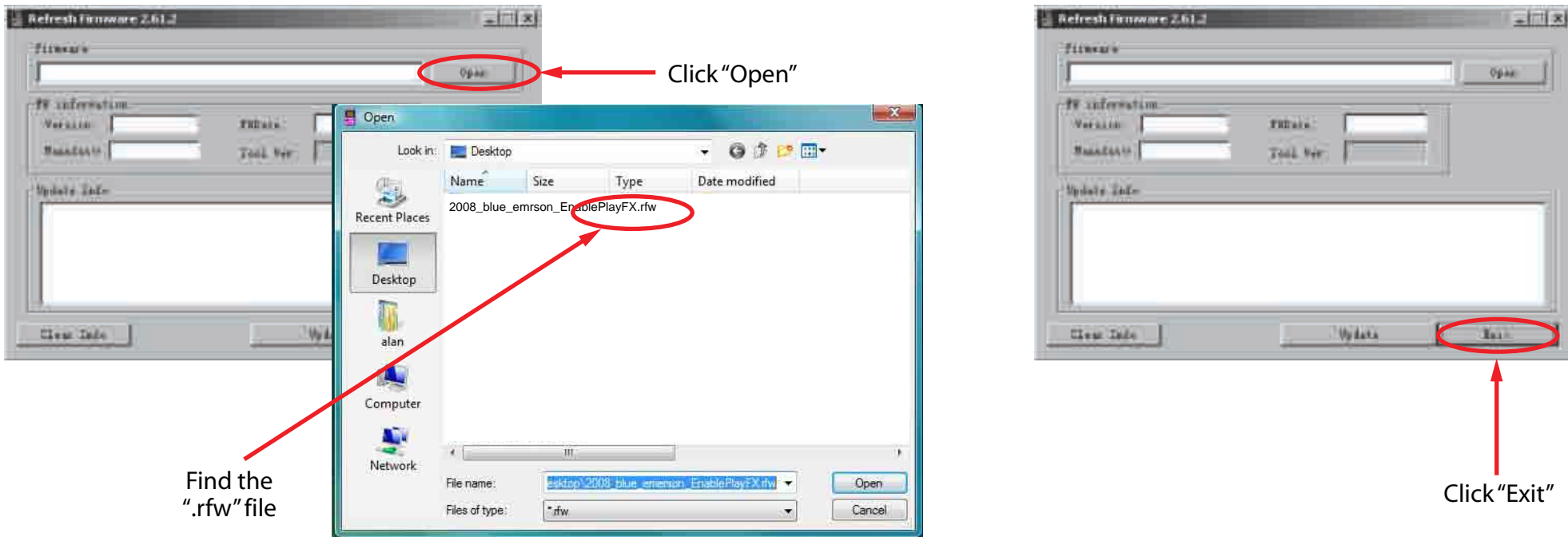
IMPORTANT:

BACK UP THE FILES FROM YOUR MP3 VIDEO PLAYER ONTO YOUR COMPUTER, BECAUSE DURING THE FIRMWARE REINSTALLATION THE MEMORY WILL BE FORMATTED AND ERASED.

Follow these steps to reinstall the firmware:

1. Insert the bundled Driver CD in a CD / DVD drive of your computer.
2. The CD main menu will autorun, click "Support".
3. Select "Firmware Utility" (you can run the installation wizard directly with the file "setup.exe" inside the "Firmware" folder should the autorun not load).
4. Go through the installation steps by pressing "Next".
5. Once the installation has finished, run the application through **"Start" → "All programs" → "Firmware Update"**.
6. Download the latest version of the firmware from our website www.slickusa.com/emerson, and make sure that the firmware you are installing is for your model, otherwise you will damage the device.

7. Press "Open" and select the right .r fw firmware file for your model (i.e. EMP414-4.r fw).
8. In that moment, power on your **MP3 Video Player**, select **"SETTINGS"** → **"SYSTEM"** → **"Upgrade"** option and choose "Yes".
9. Plug the device to your computer using the included USB 2.0 cable.
10. Press the "Update" button.
11. Wait until the process ends (up to 10 minutes). The "Update" button will activate again and the text "Firmware Update Successful" will appear.
12. Press the "Exit" button.



TROUBLESHOOTING

If you have problems while operating your player, please check the points below before sending it to the service center.

Can not power on

- The battery may be exhausted, please recharge the battery.

Files can not be downloaded

- Check the connection between the player and PC.

No sound from the headphones

- Please ensure the volume is turned up, and the headphones are properly connected.
- Check if the format of music file is supported by the player.

Can not record

- Check if there is enough memory and battery capacity.

Display is in the wrong language

- Please ensure you selected the correct language from the “**SETTINGS**” menu.

My computer is not detecting the MP3 Video Player with Windows Vista

- There is a USB mass storage devices recognition issue with Windows Vista acknowledged by Microsoft. A solution is available in the Service Pack 1 which may be downloaded from Microsoft's website.

I cannot display my .jpg files

- Many digital cameras and image editing software add hidden data to the .jpg files. This data can prevent your MP3 from loading the images. Try to eliminate them by saving the file with another name.

Player freezes or is not functioning properly

- Press the [Reset] button on the back of MP3 player using the tip of a paper clip or pin.

NOTE: Pressing the [Reset] button will not affect the files stored on the player.

SPECIFICATIONS

Display	1.8 inch 65K color LCD	
Connect with PC	USB 2.0 (HIGH SPEED)	
Built-in memory	4GB	
Power source	Built-in Lithium battery	
Recording	Sampling rate	8 KHz/16KHz
	Recording format	WAV (32Kbps/64Kbps)
	Recording time	8 hours (128M Flash)
MP3, WMA	Earphone Max output	(L) 5mW+ (R) 5mW (32ohm)
	MP3 bit rate	8Kbps - 320Kbps
	WMA bit rate	32Kbps - 384Kbps
	Frequency response	20Hz to 20KHz
Music file format	MP1, MP2, MP3, WMA, WAV	
Video file format	AVI	
Operating temperature	-5 - 40° C	
Language	English, Spanish, German, French, Italian, Portugese, Chinese, Japanese, Korean etc.	
OS	Windows 98/SE/ME/2K/XP	

 **LIMITED WARRANTY**

In the unlikely event that this product is defective, or does not perform properly, you may within ninety (90) days from your original date of purchase return it to the authorized service center for repair or exchange.

TO OBTAIN WARRANTY SERVICE:

- Provide proof of the date of purchase within the package (Dated bill of sale)
- Prepay all shipping costs to the authorized service center, and remember to insure your return.
- Include a return shipping address (no P.O. Boxes), a telephone contact number, and the defective unit within the package.
- Describe the defect or reason you are returning the product.

Your product will be repaired or replaced, at our option, for the same or similar model of equal value if examination by the service center determines this product is defective. Products received damaged as a result of shipping, will require you to file a claim with the carrier.

The shipping address of the authorized service center is:



**Southern Telecom Inc.
ATTN: Returns Department
14-C 53rd Street
Brooklyn, NY 11232**

Should you have any questions or problems concerning this product, please contact our customer service department at:



1-877-768-8483 (Toll Free)

Monday - Thursday: 9AM - 5PM (EST)

Friday: 9AM - 3PM (EST)

or

via e-mail at



cs@southerntelecom.com

To obtain service after the warranty period, please e-mail cs@southerntelecom.com with product information, date of purchase and nature of the problem. Customer service will reply to the e-mail with service instructions.

Warranty service not provided:

This warranty does not cover damage resulting from accident, misuse, abuse, improper installation or operation, lack of reasonable care, and unauthorized modification. This warranty is voided in the event any unauthorized person opens, alters or repairs this product. All products being returned to the authorized service center for repair must be suitably packaged.

Limitation of Warranty:

- THE WARRANTY STATED ABOVE IS THE ONLY WARRANTY APPLICABLE TO THIS PRODUCT. ALL OTHER WARRANTIES, EXPRESS OR IMPLIED (INCLUDING ALL IMPLIED WARRANTIES OF MERCHANTABILITY OR FITNESS FOR A PARTICULAR PURPOSE) ARE HEREBY DISCLAIMED. NO VERBAL OR WRITTEN INFORMATION GIVEN BY SOUTHERN TELECOM INC. IT'S AGENTS, OR EMPLOYEES SHALL CREATE A WARRANTY OR IN ANY WAY INCREASE THE SCOPE OF THIS WARRANTY.

- REPAIR OR REPLACEMENT AS PROVIDED UNDER THIS WARRANTY IS THE EXCLUSIVE REMEDY OF THE CONSUMER, SOUTHERN TELECOM INC. SHALL NOT BE LIABLE FOR INCIDENTAL OR CONSEQUENTIAL DAMAGES RESULTING FROM THE USE OF THIS PRODUCT OR ARISING OUT OF ANY BREACH OF ANY EXPRESS OR IMPLIED WARRANTY ON THIS PRODUCT. THIS DISCLAIMER OF WARRANTIES AND LIMITED WARRANTY ARE GOVERNED BY THE LAWS OF THE STATE OF NEW YORK. EXCEPT TO THE EXTENT PROHIBITED BY APPLICABLE LAW, ANY IMPLIED WARRANTY OF MERCHANTABILITY OR FITNESS FOR A PARTICULAR PURPOSE ON THIS PRODUCT IS LIMITED TO THE APPLICABLE WARRANTY PERIOD SET FORTH ABOVE.

How state law relates to this warranty:

- Some states do not allow the exclusion nor limitation of incidental, consequential damages, or limitations on how long an implied warranty lasts so the above limitations or exclusion may not apply to you..
- This warranty gives you specific legal rights, and you also may have other rights that vary from state to state.



Manufactured by: AIT Inc. Brooklyn, NY 11232

Emerson and the G-Clef logo are registered trademarks of Emerson Radio Corp. Parsippany, New Jersey USA

© 2009 AIT Inc. All rights reserved

Microsoft, the Windows logo, and Windows Media are either registered trademarks of Microsoft Corporation
in the United States and / or other countries.
